

Please be aware this coat is NOT water proof, it is only a water repellent fabric.

To help preserve your coat and keep it looking at its best we recommend dry cleaning

We also recommend you do not clean it too frequently as every clean reduces the longevity of a clothing item.

If dry cleaning is unavailable, please follow the instructions printed inside this leaflet relating to how to wash your coat.

In the unlikely event that your garment has some loose thread ends the first rule is NOT to pull them, you MUST ALWAYS cut them about 2mm away from the garment face, do not cut them any shorter.

If you decide to pull a thread end, in many instances it will create a worse problem.

The stitching types used in certain areas of garments are created in a way that pulling at a thread can cause it to unravel. e.g. hem stitching, button stitching, buttonhole stitching and some seam stitching.



Uniforms for Work Limited  
Unit 7, Lister Park  
Green Lane Industrial Estate  
Featherstone  
West Yorkshire  
WF7 6FE

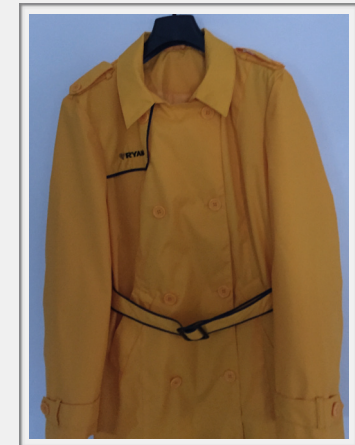
Tel: 01977 707010  
Fax: 01977 790698

Web site address:  
<http://www.uniformsforwork.com>  
contact us by email: [sales@uniformsforwork.com](mailto:sales@uniformsforwork.com)



Ladies wear

How to Care for your New Uniform Coat



## Coat

Unpack your coat as soon as you receive it, place it on a hanger to encourage any creases to drop out – DO NOT attempt to steam these creases out – this fabric will melt if it comes into contact with direct heat.



During wear in wet conditions some dimpling may become apparent. This will disappear as soon as the garment is fully dried.

To speed up the drying process, if you have a towel handy wipe down the wet areas, hang your coat on a hanger and let it dry naturally.

DO NOT place it on a radiator, in an airing cupboard or on any other direct heat source – it needs to dry at room temperature away from direct heat.

Do not leave it folded whilst it is wet, ensure it is always fully dry before you pack it away – if you cannot do this, shake any excess water from it – try to dry it with a towel if possible; then fold it so the wet outer fabric is on the inside. Then as soon as it is possible place it on a hanger to dry naturally.

DO NOT place it on a radiator, in an airing cupboard or on any other direct heat source – it needs to dry at room temperature away from direct heat.

Do not leave it folded whilst it is wet, ensure it is always fully dry before you pack it away – if you cannot do this, shake any excess water from it – try to dry it with a towel if possible; then fold it so the wet outer fabric is on the inside. Then as soon as it is possible place it on a hanger to dry naturally.

## How To Wash Your Coat:

Do not bleach or use whiteners, Do not use fabric conditioners (check your detergent does not have a conditioner or bleaching agents in it).

This should be washed on its own and not with any other garment.

Before washing make sure none of the front buttons are fastened, take the belt out of the belt loops

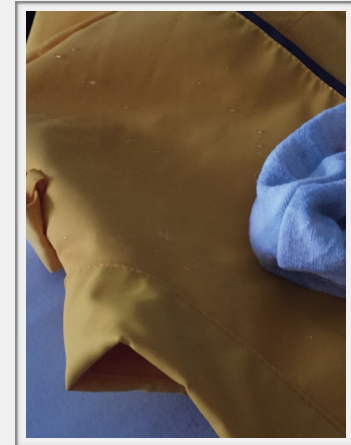


Before washing – spot clean stains by hand with a detergent and sponge



Wash it at 30 degrees on a wool cycle or delicates cycle – you can spin this at 800 revolutions.

As soon as it has finished washing take it out of the machine hold the shoulders and shake off the excess water, place it on a hanger to dry. To speed up the drying process you can towel dry any wet areas. – do not use a dark towel



Dimpling may become apparent when the garment is wet – this will disappear as soon as the garment is fully dried.

DO NOT place it on a radiator, in an airing cupboard or on any other direct heat source – it needs to dry at room temperature away from direct heat.

This garment CAN NOT BE IRONED it will melt.